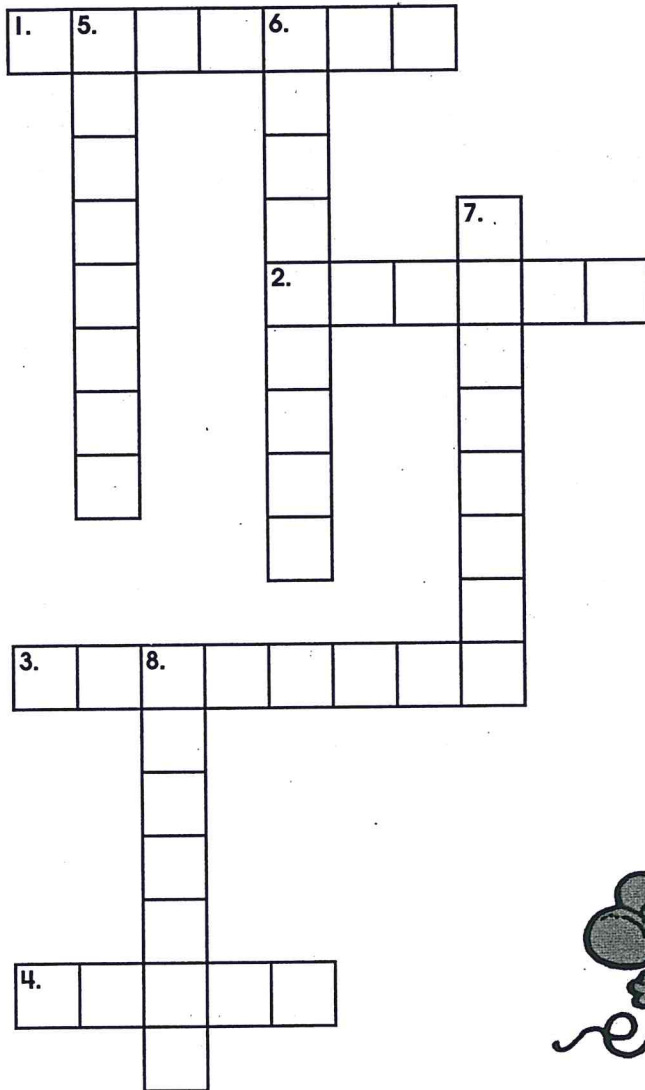
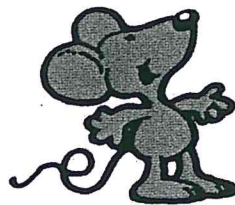
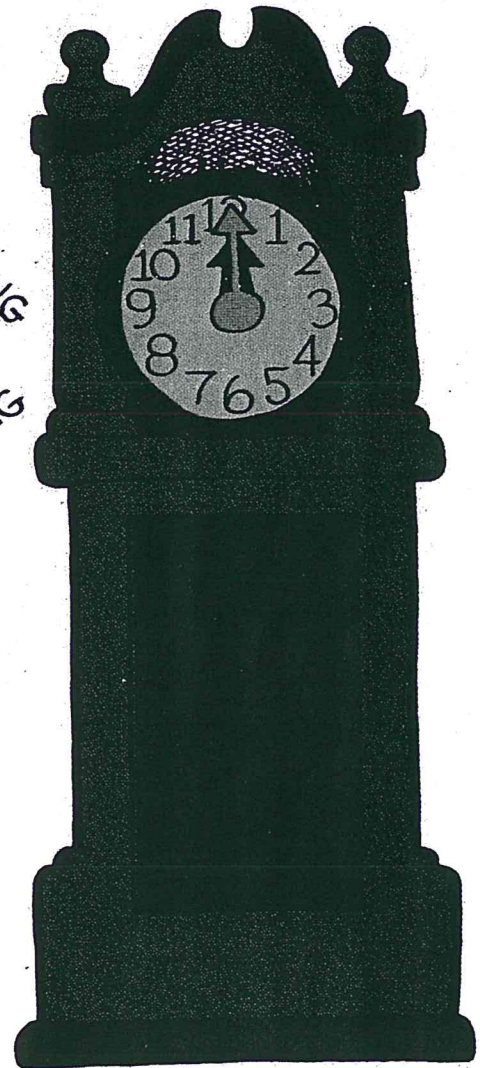


## Prefix Crossword



DONG  
DONG



A **prefix** is a word part added to the **beginning of a word** that changes its meaning.

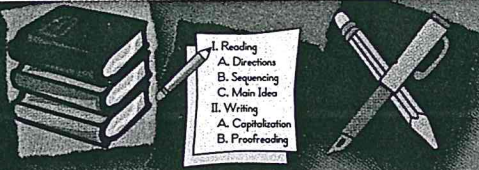
**Directions:** Match the words in the word box with their definitions below. Write them in the correct places in the puzzle.

### Across

1. not usual
2. fill again
3. middle of the night
4. set again

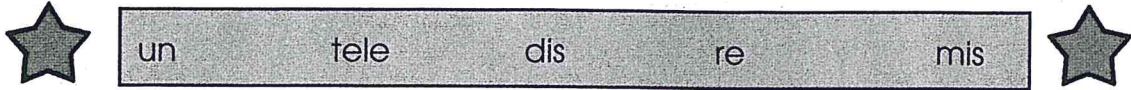
### Down

5. not making sense
6. not certain
7. count wrongly
8. take away frost



## Missing Prefixes

**Directions:** Read the story. Use the prefixes in the word box to write in the missing prefixes.



### Star Trip

As usual, the Little Prince of Mars sat in front of his big-screen



vision. "This life is very



interesting," he thought.

Just then, he heard a knock at the door. When he opened the door, a

messenger handed him a



gram. "There must be some



take," said the Little Prince. But when he opened the envelope,

he was surprised. The



happy frown on his face



appeared.

He was going on a trip to the stars! The Little Prince

was



certain what to pack. He dashed for his



scope and

magic crystal kit. He packed and



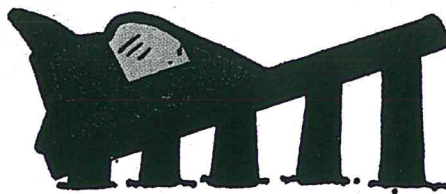
packed his star travel

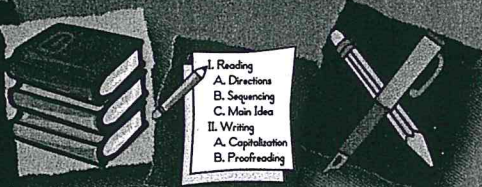
bag until everything fit. Someday he would



turn to his own planet,

but until then, he was ready for an adventure in the stars!





## Tony's Tuxedo

banjo  
buffalo  
echo  
halo  
mosquito  
patio  
portfolio  
ratio  
rodeo  
silo  
soprano  
stereo  
studio  
tobacco  
tomato  
tornado  
tuxedo  
zero

**Directions:** Write the words from the word box according to their number of syllables. The first one is done for you.

### Two-Syllable Words

b a n • j o

\_\_\_\_\_ • \_\_\_\_\_

\_\_\_\_\_ • \_\_\_\_\_

\_\_\_\_\_ • \_\_\_\_\_

\_\_\_\_\_ • \_\_\_\_\_

### Three-Syllable Words

\_\_\_\_\_ • \_\_\_\_\_ • \_\_\_\_\_

\_\_\_\_\_ • \_\_\_\_\_ • \_\_\_\_\_

\_\_\_\_\_ • \_\_\_\_\_ • \_\_\_\_\_

\_\_\_\_\_ • \_\_\_\_\_ • \_\_\_\_\_

\_\_\_\_\_ • \_\_\_\_\_ • \_\_\_\_\_

\_\_\_\_\_ • \_\_\_\_\_ • \_\_\_\_\_

\_\_\_\_\_ • \_\_\_\_\_ • \_\_\_\_\_

\_\_\_\_\_ • \_\_\_\_\_ • \_\_\_\_\_

\_\_\_\_\_ • \_\_\_\_\_ • \_\_\_\_\_

\_\_\_\_\_ • \_\_\_\_\_ • \_\_\_\_\_

\_\_\_\_\_ • \_\_\_\_\_ • \_\_\_\_\_

### Four-Syllable Word

\_\_\_\_\_ • \_\_\_\_\_ • \_\_\_\_\_ • \_\_\_\_\_

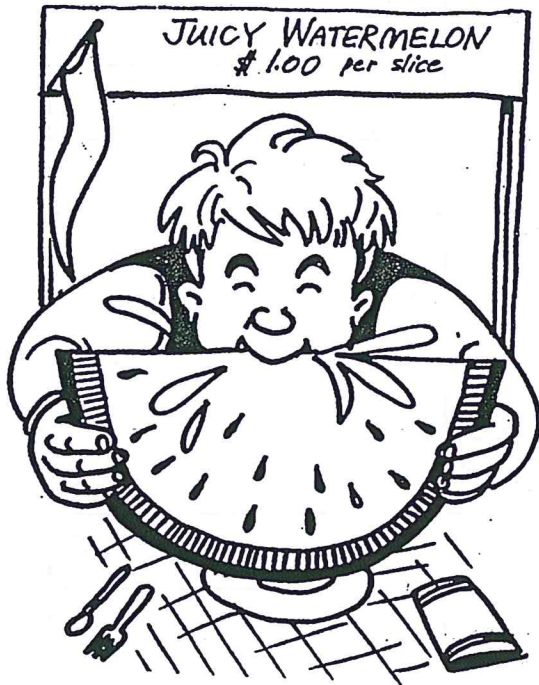


# JUICY ENDINGS

## SUFFIXES

Suffixes	Meanings	Examples
ion, tion	(state of being, act of)	action, exploration
er, or, ar, ist	(one who does something)	teacher, actor, liar, artist
able, ible	(able to be)	lovable, edible
ness	(state or condition of)	goodness
less	(without)	windowless
ful	(full of, like)	tearful
en	(to be made of, to make)	golden
ly, y	(when, how, like, in the manner of)	kindly, noisy
ize, fy	(to cause to be)	vaporize, dignify

A suffix is a word part added at the end of the root word. It changes the root's meaning. These words have been formed by adding suffixes to the roots. Write the meaning of each word.



1. supervisor \_\_\_\_\_
2. terrorist \_\_\_\_\_
3. juicy \_\_\_\_\_
4. careful \_\_\_\_\_
5. buyer \_\_\_\_\_
6. sleepless \_\_\_\_\_
7. wooden \_\_\_\_\_
8. tenderly \_\_\_\_\_
9. sadness \_\_\_\_\_
10. beggar \_\_\_\_\_
11. fantasize \_\_\_\_\_
12. purify \_\_\_\_\_
13. addition \_\_\_\_\_
14. breakable \_\_\_\_\_

Name \_\_\_\_\_

# SOMETHING'S CHANGED

## MEANINGS OF PREFIXES

anti	(against)	in	(in, into, not)	pre	(before)
bi	(two)	micro	(small)	semi	(half, part)
bene	(good)	mal	(wrong)	re	(again)
bio	(life)	mid	(middle)	sub	(under)
co	(together)	mini	(small)	super	(above)
dis	(wrong, bad)	mis	(wrong)	trans	(across)
il	(not)	non	(without, not)	un	(not)
im	(not)	post	(after)	uni	(one)



A **prefix** is a word part added to the beginning of a word. Whenever a prefix is added to a root word, the meaning of the root word is changed in some way.

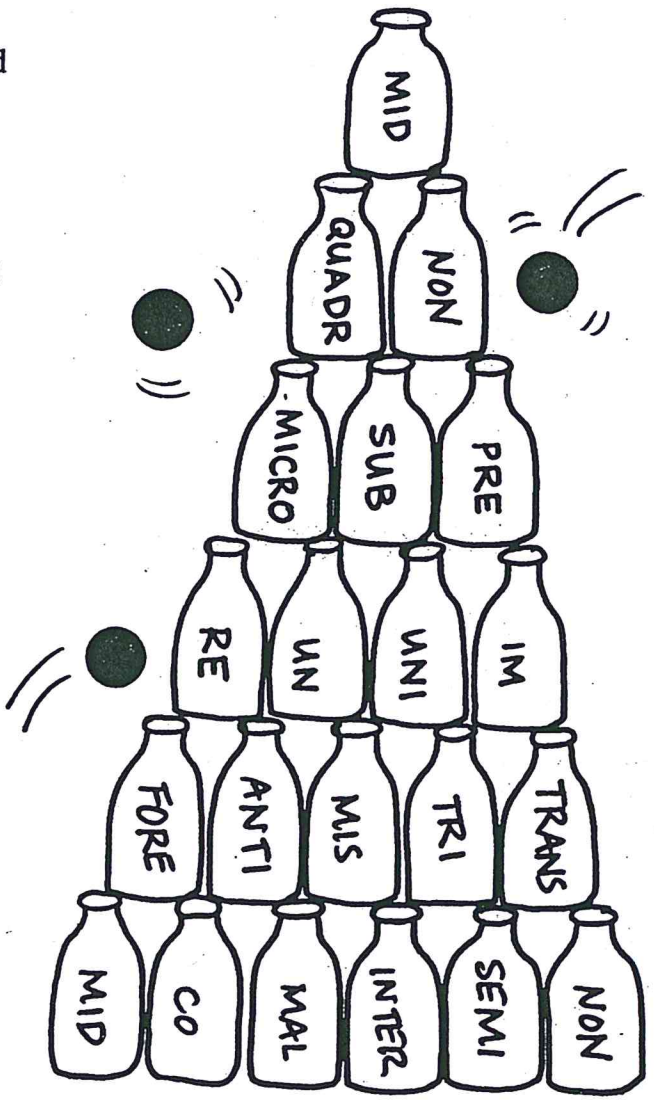
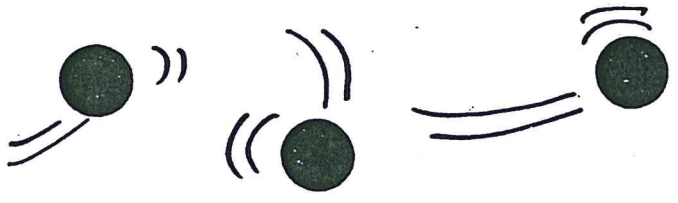
Tell the meaning of each of these words with prefixes.

- |                  |       |                 |       |
|------------------|-------|-----------------|-------|
| 1. coworker      | _____ | 12. indecent    | _____ |
| 2. midstream     | _____ | 13. rewrite     | _____ |
| 3. unfit         | _____ | 14. pretest     | _____ |
| 4. distaste      | _____ | 15. postgame    | _____ |
| 5. benefit       | _____ | 16. superpower  | _____ |
| 6. submarine     | _____ | 17. impolite    | _____ |
| 7. biorhythms    | _____ | 18. minibike    | _____ |
| 8. transatlantic | _____ | 19. semicircle  | _____ |
| 9. misbehave     | _____ | 20. antipoverty | _____ |
| 10. uniform      | _____ | 21. nonvoter    | _____ |
| 11. malfunction  | _____ | 22. unicycle    | _____ |

Name \_\_\_\_\_

# WINNING PREFIXES

Find the bottle that will give you the right prefix to make each word. Add the prefix to the root word given or defined in the example. Use each bottle only once.



- 1. fix again \_\_\_\_\_
- 2. across the ocean \_\_\_\_\_
- 3. three angles \_\_\_\_\_
- 4. wrong take \_\_\_\_\_
- 5. not a worker \_\_\_\_\_
- 6. bad nourishment \_\_\_\_\_
- 7. four-footed \_\_\_\_\_
- 8. write together \_\_\_\_\_
- 9. middle of the way \_\_\_\_\_
- 10. before surgery \_\_\_\_\_
- 11. below standard \_\_\_\_\_
- 12. not tied \_\_\_\_\_
- 13. against drugs \_\_\_\_\_
- 14. front of head \_\_\_\_\_
- 15. without toxins \_\_\_\_\_

- 16. small computer \_\_\_\_\_
- 17. not proper \_\_\_\_\_
- 18. part professional \_\_\_\_\_
- 19. between planets \_\_\_\_\_
- 20. one-wheeled cycle \_\_\_\_\_
- 21. middle size \_\_\_\_\_

Name \_\_\_\_\_

# DUNK THE DUDE

This page is full of word parts. Find the right word parts in the tub and combine them to make a word which matches the definition. You may need to use a prefix and a suffix to make a word, or even two suffixes. Also, you'll need to make slight spelling changes as you make some of the new words.

Try to get at least fifteen right. That's what it takes to push the button that dumps this dude into the tub.



1. the act of seeing something again
2. two times a week
3. to carry across
4. a condition that is not kind
5. to cause to be mobile
6. to manage poorly
7. not being able to be believed
8. not able to be moved
9. made to feel wrong at heart
10. not in a legal manner
11. full of success
12. able to be used again
13. condition of being like a friend
14. one who forms something again
15. one who does not believe
16. able to be carried across
17. to cause to be legal
18. not able to be seen

Name \_\_\_\_\_